



38<sup>th</sup> Annual

# The Waterloo Classic Road Races

Sunday, June 21, 2015

10 KM, 5 KM & 3 KM Run

www.RunWaterloo.com

## COLLECT FANTASTIC FUNDRAISING PRIZES! (prizes are cumulative)

Minimum \$100 in Pledges	Minimum \$250 in Pledges	Minimum \$500 in Pledges	Minimum \$1,000 in Pledges	Top Fundraiser
Free Entry	\$100 Saucony Gift Certificate	Saucony Running Shoes 	Garmin 10 GPS Watch	\$500 Saucony Gift Certificate at 
(total value \$35)	(total value \$135)	(total value \$260)	(total value \$500)	(total value \$1000)



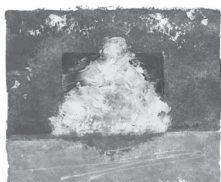
### About Mary Bales

2014 saw the loss of an iconic champion for affordable housing. Mary Bales was the founder and Chair of Heartwood Place. She committed herself to providing a safe, affordable place to call home to all in our region. She was given a Governor General's award for Meritorious Service and will be greatly missed. The board and staff of Heartwood Place are committed to continuing this legacy. We are actively looking for people in our community committed to getting more people off the waiting list and want to find a way to build a third project.

We hope you will go out and get pledges from your family, friends and co-workers and challenge others by holding a bbq, having a garage sale, a book sale, a bake sale or whatever you can think of to make this year the best Waterloo 10KM Classic ever.

Special thanks to Peter Benninger of Coldwell Banker Peter Benninger Realty for their support of this event. Thanks to everyone who helps makes The WATERLOO 10KM CLASSIC an amazing event every year! HEARTWOOD PLACE is grateful to be the designated charity and thanks all the fundraisers for their enthusiastic

support and hard work!



HEARTWOOD PLACE

### About Heartwood Place

HEARTWOOD PLACE was established in 2001 by local volunteers committed to addressing the housing crisis in our region. With 10,000 people on the waiting list for affordable housing, there was a serious need! A strong board and committed staff share the belief that creating "safe, affordable and adequate housing" is making a significant difference for our tenants, the surrounding neighbourhoods and communities in our region. We also know that sound property management is essential for continued success.

Our first project on Gaukel Street in downtown Kitchener created 33 affordable apartments and has been a wonderful addition to the neighbourhood. Our tenants have a great sense of pride in the building, several participate in the management and maintenance. This project was recognized by CMHC with a "National Housing Award for Best Practices".

HEARTWOOD PLACE is proud of its new building at 26 Ainslie St S, the former Cambridge Reporter site in downtown Galt. Addressing the issues of contamination caused delays but we welcomed new tenants for 66 apartments in September 2010. A national award recognized HEARTWOOD PLACE on AINSLIE as the Best Small Brownfield Project in Canada. We are now busy looking for a site for our third project.

Questions contact Liz Heath at 519-754-9315 x223 or lhealth@heartwoodplace.ca

For more info visit [www.heartwoodplace.ca](http://www.heartwoodplace.ca)



PETER BENNINGER REALTY

Independently Owned & Operated Brokerage

## FUNDRAISING IDEAS

This event is a fundraiser for Heartwood Place, and we need YOUR help to reach our goal! The two easiest ways to raise money are by paper form and online:

### Need some help getting started?

- Sponsor yourself!
- Ask some colleagues, friends, and neighbours to sponsor you
- Keep this form handy to ask for donations on-the-go
- Staple an envelope to it – cash, cheques and coins are all acceptable
- You can also write your story of why you're supporting these charities

### Start your online pledge profile

- Every runner has an easy-to-use online pledge profile
- Just go to the race website, click on "Pledge A Participant" and search for yourself
- Share this link on Facebook, Twitter, or to your email contacts, along with your story!



38<sup>th</sup> Annual

# The Waterloo Classic Road Races

Sunday, June 21, 2015

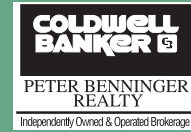
10 KM, 5 KM & 3 KM Run

www.RunWaterloo.com



## OFFICIAL PLEDGE FORM

ALL PLEDGES DONATED TO HEARTWOOD PLACE



Participant Name:		Full Postal Address:		Phone:	
Sponsor's Name		Full Address (please print clearly and indicate if a tax receipt is required ☺) Street City Postal Code		Amount Pledged *	Tax Rec. *
1				.	
2				.	
3				.	
4				.	
5				.	
6				.	
7				.	
8				.	
9				.	
10				.	
11				.	
12				.	
13				.	
Check <input checked="" type="checkbox"/> if entry fee refunded  <input type="checkbox"/>		Total Pledges Collected on this sheet (photocopy additional sheets if required)		.	
		Total Pledges Collected Online		.	
		Total Pledges Collected		.	

\* For pledges of \$20 or more, indicate (✓) if a tax receipt is required.

Please make cheques payable to "The Waterloo Classic"

HEARTWOOD PLACE is committed to protecting the privacy of your personal information. We will use your information for follow up contacts (such as newsletters) and to process and recognize donations. If you do not wish to be added to our mailing list, please check this box.

View our privacy statement online at <http://www.heartwoodplace.ca/about/index.htm>

Charitable registration number 86600 4419 RR0001

All pledge money must be received on or before race day for participants to be eligible for prizes.

Please note: In accordance with Canada Revenue Agency regulations, if you make a contribution to your own sponsorship total, the amount of your donation receipt may be reduced by the fair market value of the incentive prize you receive.